



MOTOROLA L2 / L6



Design Overview

PTT Key
(Dedicated key –
Region/Customer's flex
setting)
or
Voice Key
(Dedicated key –
Region/Customer's flex
setting)

Left Soft Key
(Default Setting
– Changeable by user)

Menu Key

**Battery
Release
Button**

**Mini USB
Connector**

**Browser
Key**
(Smart Key)
(Changeable by user)

Right Soft Key
Message
(Default Setting
– Changeable by user)

Navi Key

With Dynamic Idle:



**Channel
Selection**
(via Navi-Key)

Service Engineering & Optimization

Level 1 / 2 , Rev.1.0



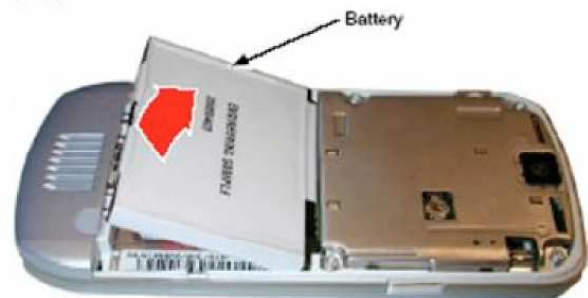
Disassembly of the Backhousing section

1.



Press the battery cover latch on the bottom of the phone, and lift the battery cover up from the phone and lift it off.

2.



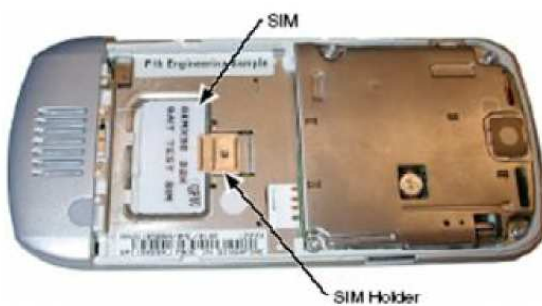
- Lift the top end of the battery as indicated.
- Lift the battery up and out of the battery compartment.



MOTOROLA L2 / L6

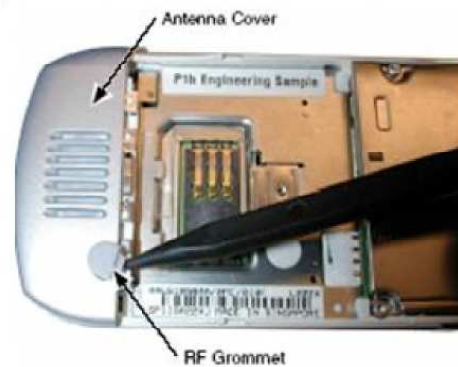


3.



- Unlock the SIM holder by sliding it away from the SIM.
- Lift up the SIM and remove it from the phone.

4.



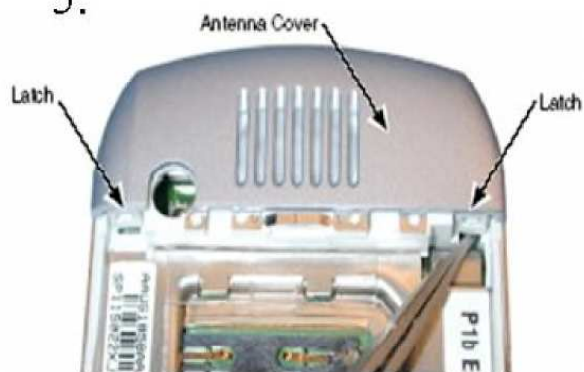
Use the disassembly tool to gently pry off the RF grommet located on the antenna cap.



MOTOROLA L2 / L6

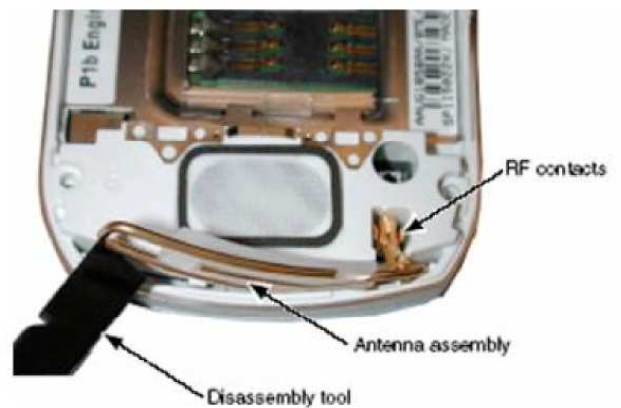


5.



Use the metal tweezers to release the antenna cover latches.

6.



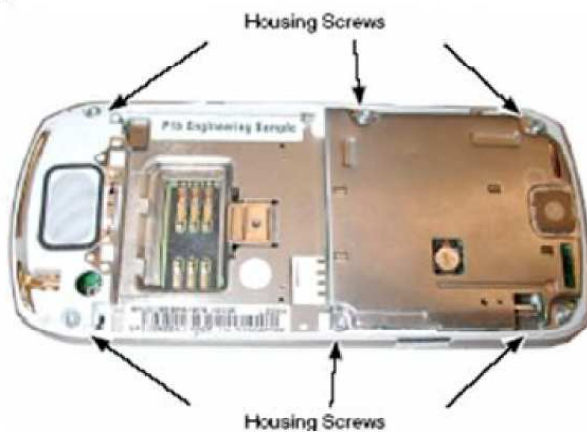
Use the disassembly tool to lift the side of the antenna out of the phone.



MOTOROLA L2 / L6



7.



- Using a Torx Plus driver with a T5 bit, remove the 6 housing screws from the phone. Set the screws aside for re-use.
- Lift the metal shield away from the phone.

8.



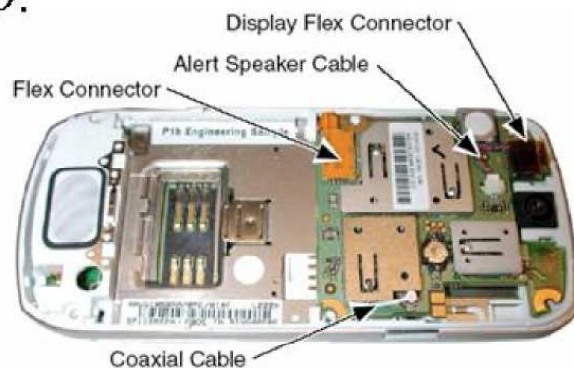
- Turn the PC board shield over to reveal the motor/vibrator assembly.
- Use the disassembly tool or the plastic tweezers to lift the motor/vibrator assembly from the PC board shield .



MOTOROLA L2 / L6



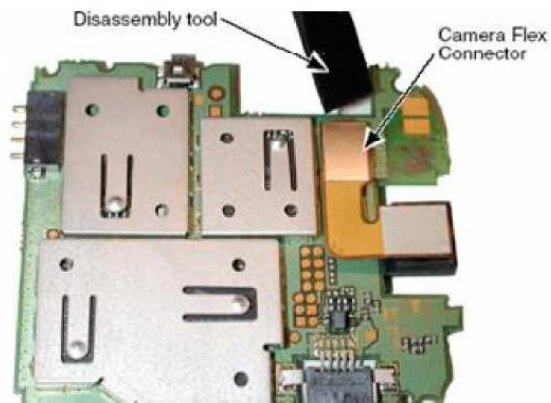
9.



- Insert the flat end of the disassembly tool under the flex connector to unseat it from the transceiver PC board.
- Use the metal tweezers to unseat the alert speaker connector from its socket on the transceiver PC board.
- Use the metal tweezers to unseat the coaxial cable connector from the transceiver PC board.
- Use the disassembly tool to unseat the flex connector from its socket on the Transceiver PC board.
- Carefully lift one side of the transceiver PC board out of the phone. Be careful to avoid damage to the two flex cables and the coaxial cable.
- Lift the transceiver PC board completely out of the phone.



10.



- Use the disassembly tool to unseat the camera assembly flex connector from the transceiver PC board assembly.
- Lift the camera assembly away from the transceiver PC board.

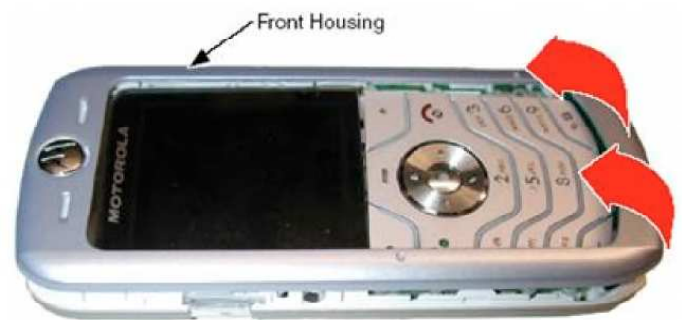


Disassembly of the Fronthousing section

1.



2.



- Insert the disassembly between the front housing and the chassis assembly.
- Slide the disassembly tool around the phone between the front housing and the phone to release the housing catches along the sides of the Front Housing.

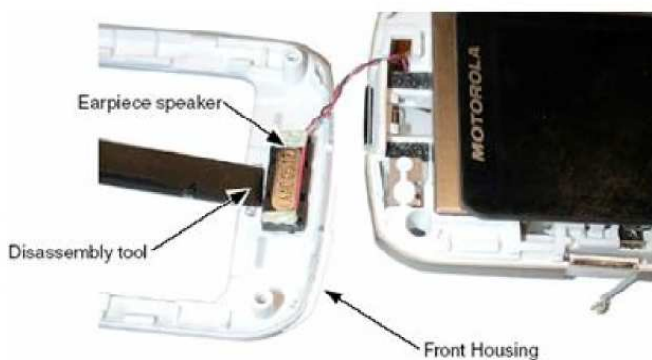
- Carefully lift the bottom end of the front housing over the phone.



MOTOROLA L2 / L6

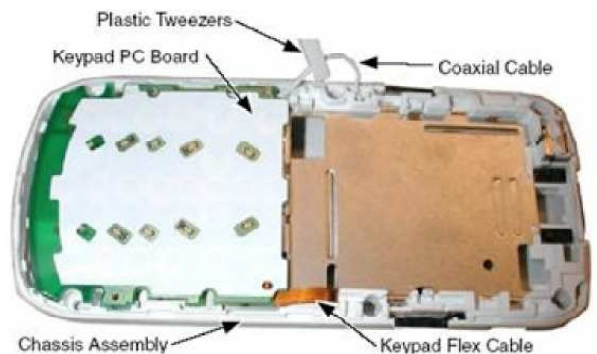


3.



- Carefully lift the bottom end of the front housing over the phone.
- Use the disassembly tool to separate the earpiece speaker from the front housing.
- Remove the front housing.

4.

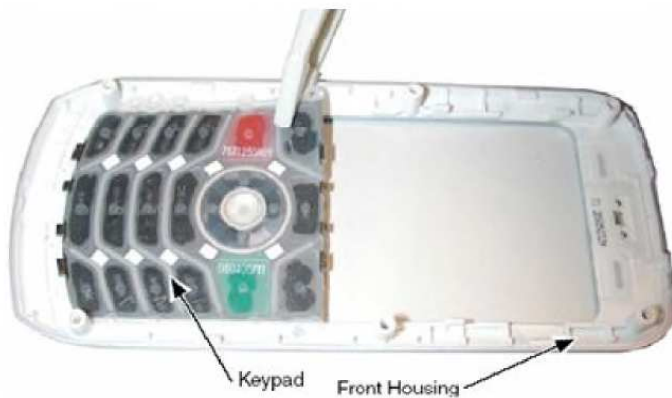


- Use the plastic tweezers to remove the end of the coaxial cable from the chassis assembly.



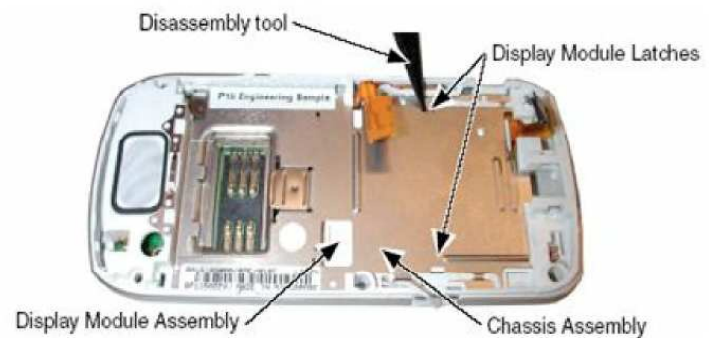
Disassembly of the Fronthousing section

5.



- Lift the keypad up from one corner as Shown, and remove it from the front housing.

6.

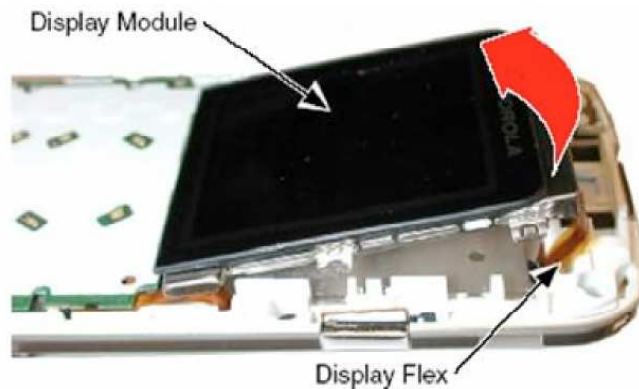


- Use the disassembly tool to release the display module assembly latches located under the chassis assembly.

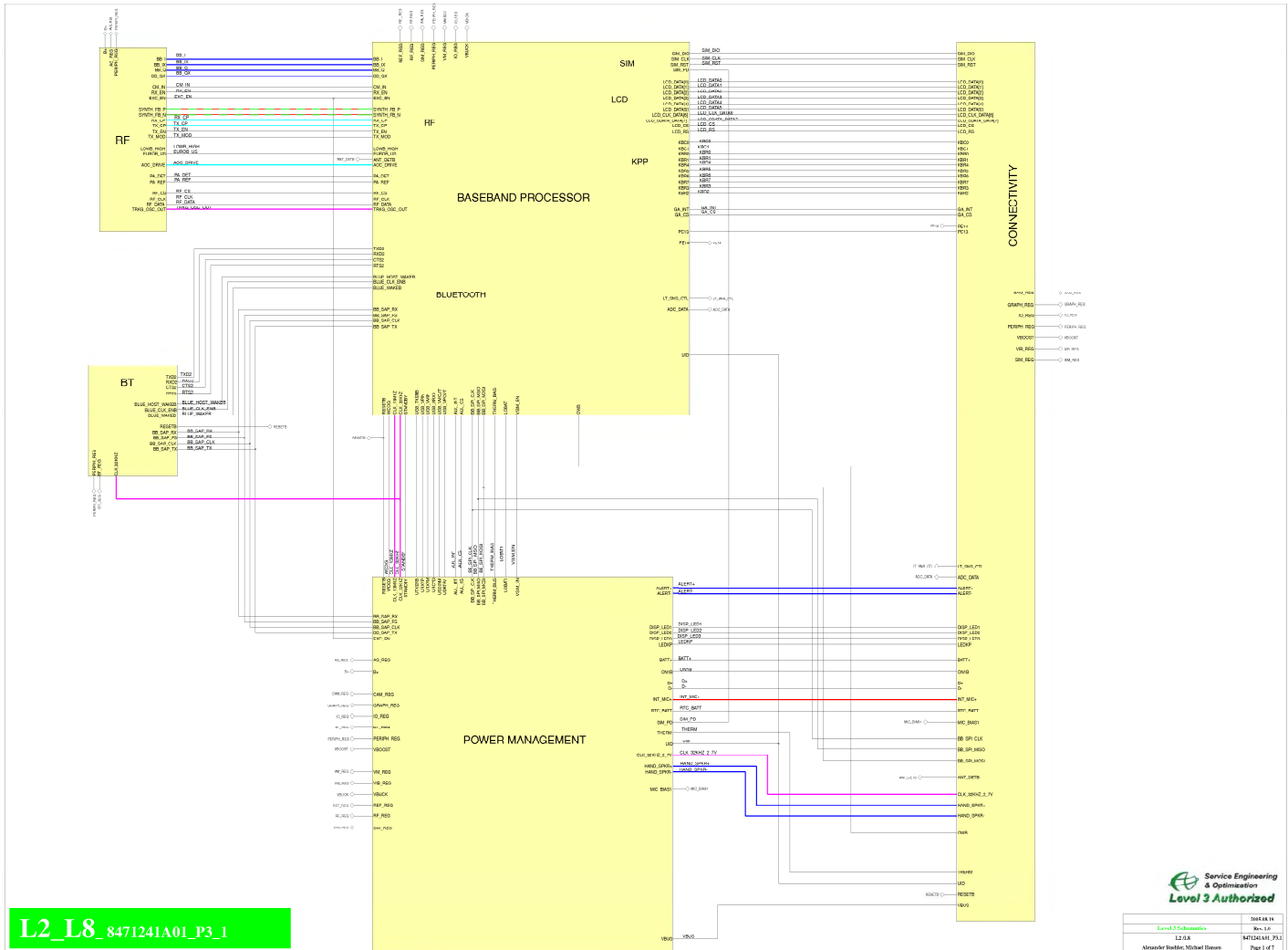


Disassembly of the Fronthousing section

7.



- Turn the chassis assembly over and lift the top edge of the display module.
- Carefully thread the display flex cable through the slot in the chassis assembly and lift the display module away from the chassis.



| | |
|-------------------------------------|----------------|
| Level 3 Schematic | Rev. 1.0 |
| 12.5.8 | MT1241A01_P3_1 |
| Alexander Bruckner, Michael Steiner | Page 1 of 7 |

BASEBAND PROCESSOR (BB)

JTAG TESTPOINTS

TP_TRST @ TRST
TP_TDI @ TDI
TP_TDO @ TDO
TP_TMS @ TMS
TP_TCK @ TCK
TP_RTCK @ RTCK

TP_MCU_DEB @ MCU_DEB

TP_DSP_DEB @ DSP_DEB

TP_RESETB @ RESETB

INT3 @ INT3

EBW @ EBW

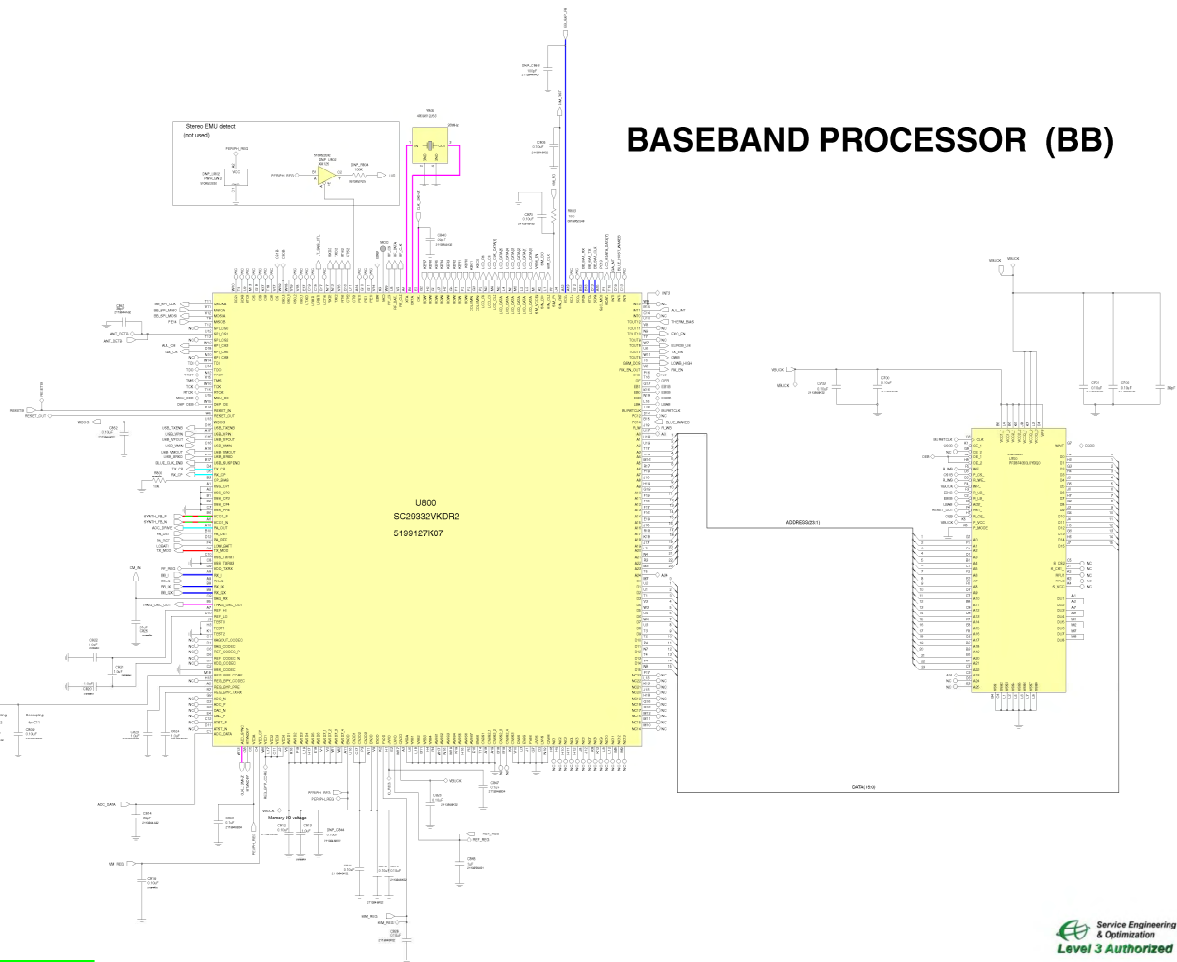
TP_JTAG @ JTAG

CS0B @ CS0B

CS1B @ CS1B

TP_R_WB @ R_WB

TP_CEB @ CEB

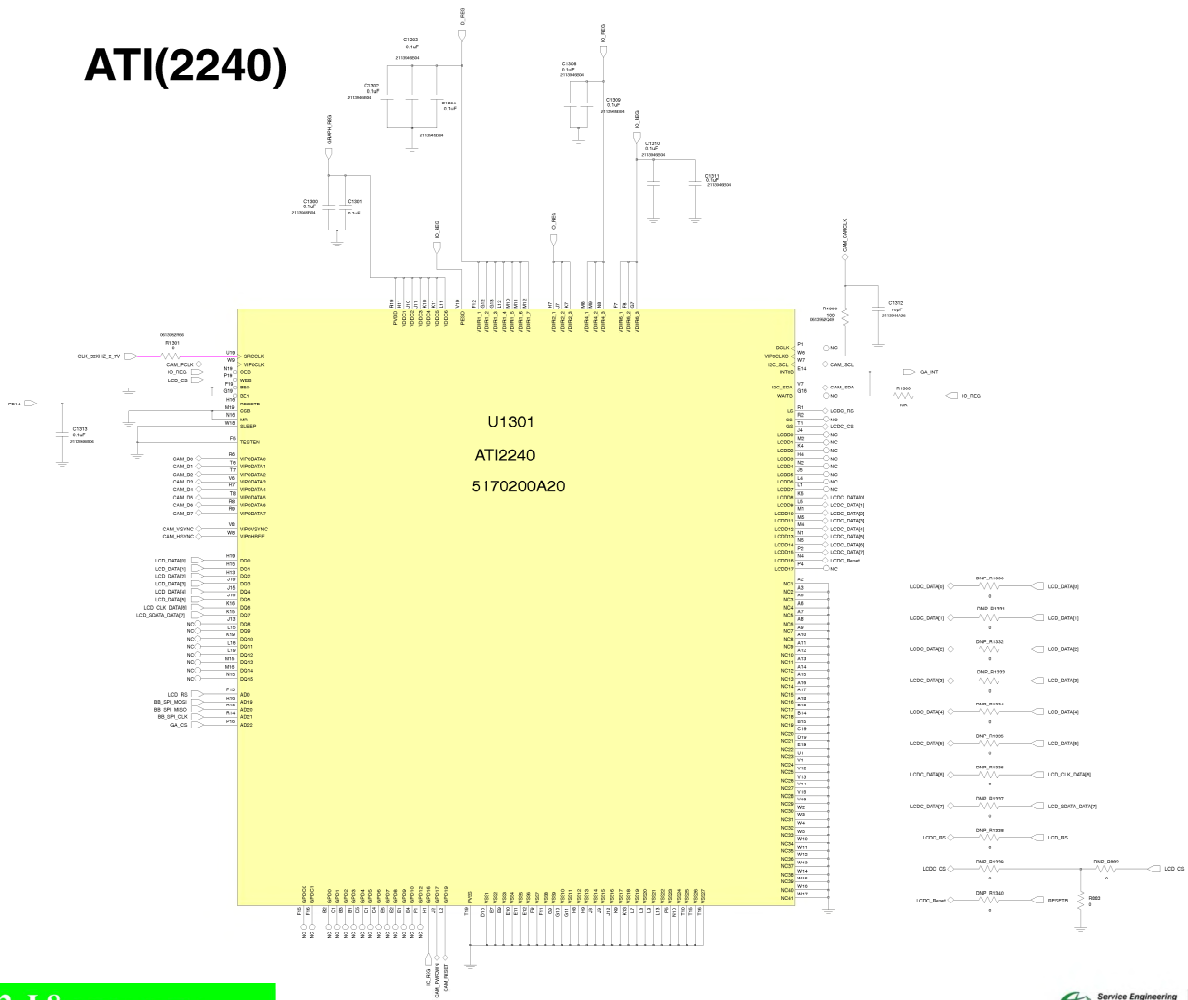


L2_L8_8471241A01_P3_1

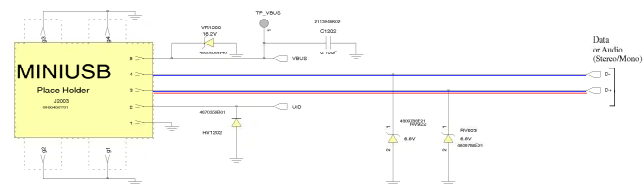
Service Engineering
& Optimization
Level 3 Authorized

| | |
|------------------------------------|-------------|
| Level 3 Schematics | 2015.08.29 |
| L2_L8 | Rev. 1.0 |
| 8471241A01_P3_1 | Rev. 1.0 |
| Alexander Bruckner, Michael Dörner | Page 1 of 7 |

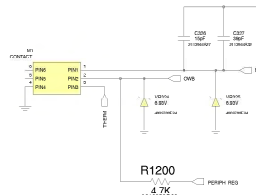
ATI(2240)



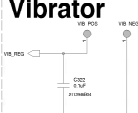
L2_L8_8471241A01_P3_1



BATTERY



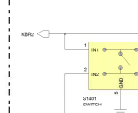
Vibrator



R18 Conn

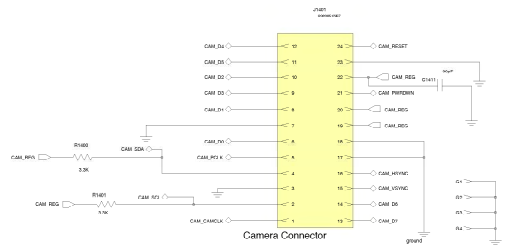


PTT/CAMERA

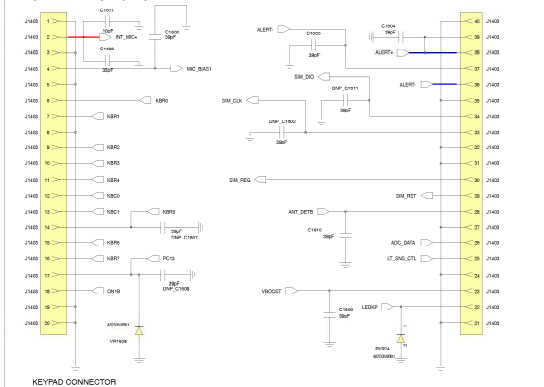


LCD_Conn

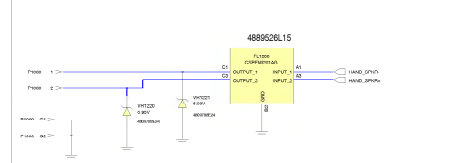
Camera_Conn



Main Board Conn



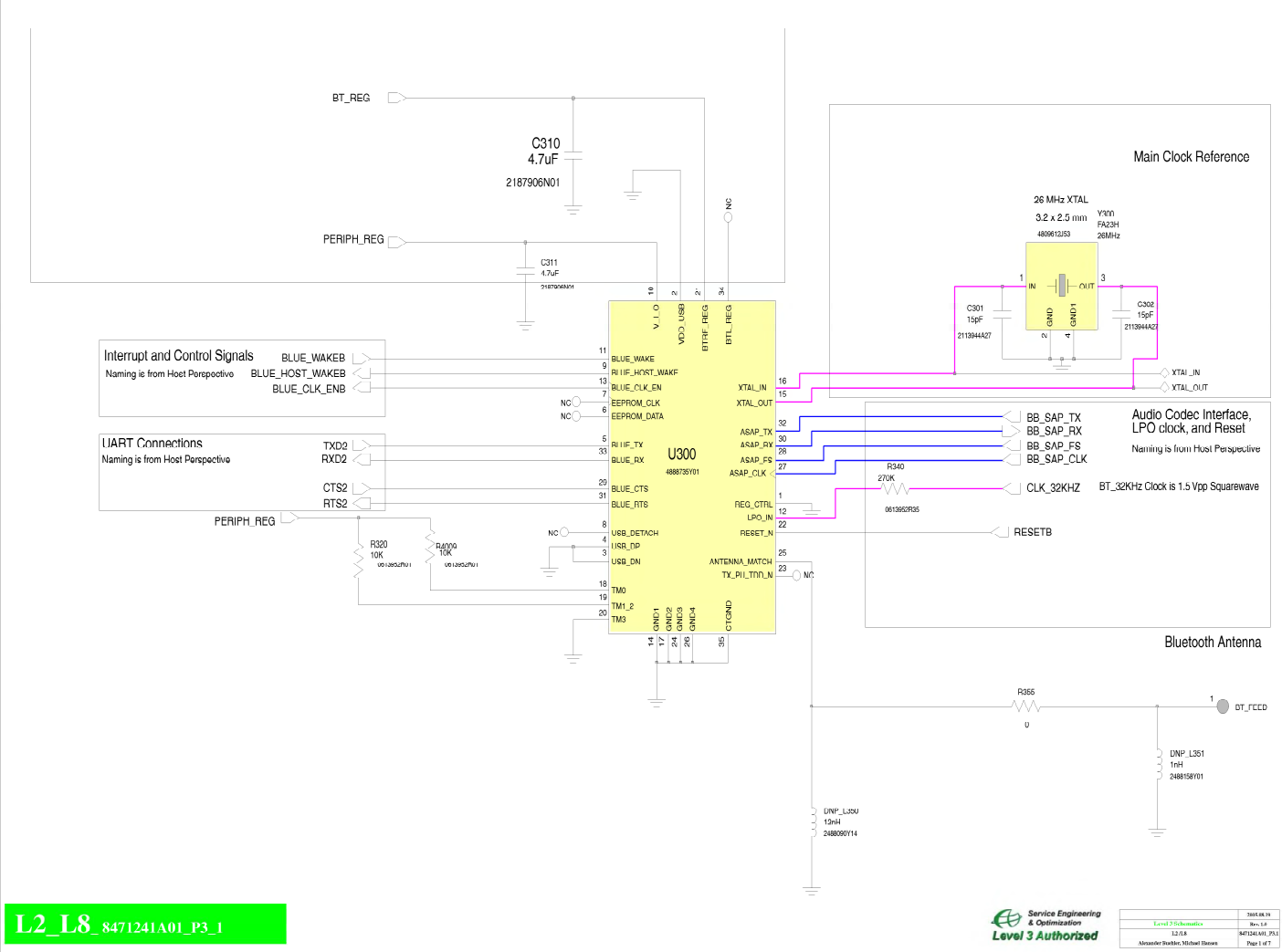
EARPIECE/HANDSET SPEAKER



L2_L8_8471241A01_P3_1

Service Engineering
& Optimization
Level 3 Authorized

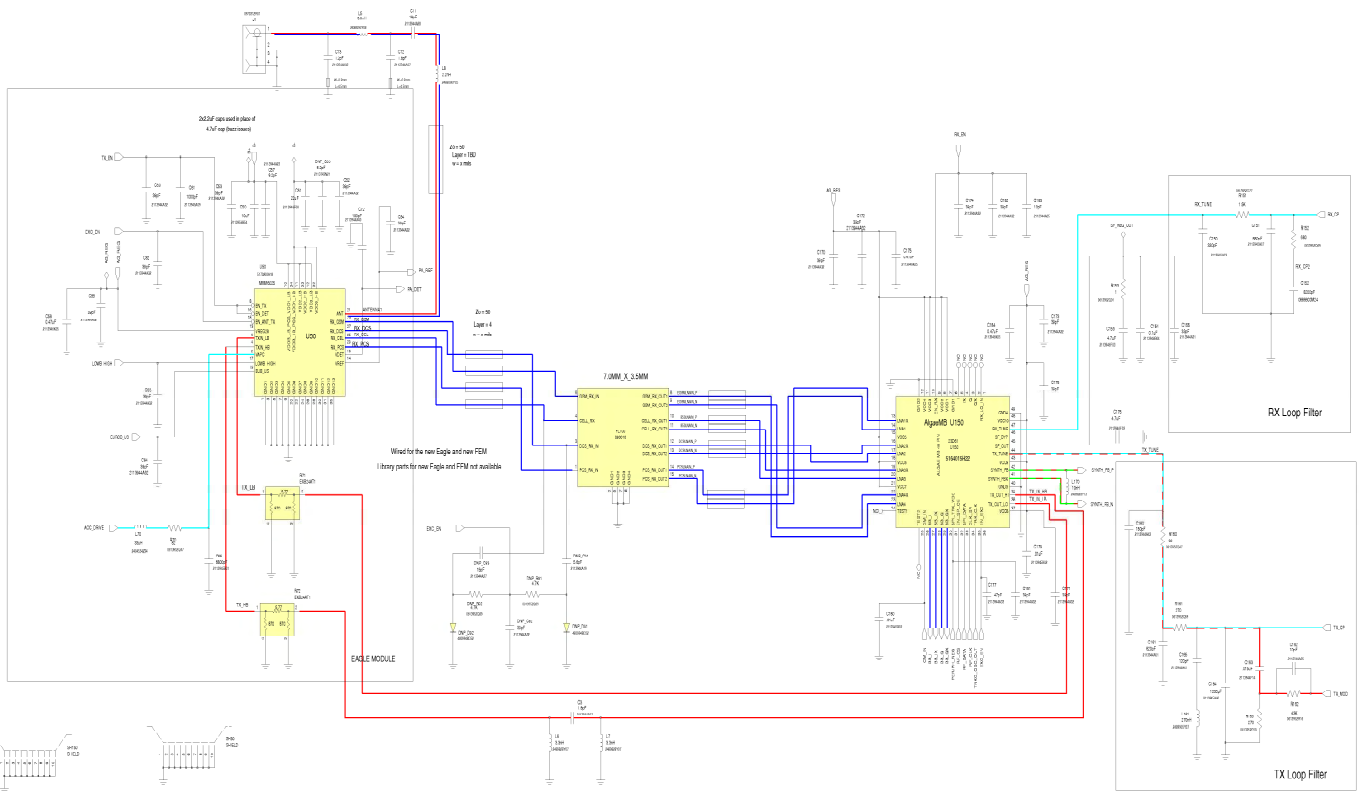
| | |
|----------|-----------------|
| Rev. 1.0 | 8471241A01_P3_1 |
| Rev. 1.1 | 8471241A01_P3_1 |
| Rev. 1.2 | 8471241A01_P3_1 |
| Rev. 1.3 | 8471241A01_P3_1 |
| Rev. 1.4 | 8471241A01_P3_1 |
| Rev. 1.5 | 8471241A01_P3_1 |
| Rev. 1.6 | 8471241A01_P3_1 |
| Rev. 1.7 | 8471241A01_P3_1 |



L2_L8_8471241A01_P3_1

Service Engineering & Optimization
Level 3 Authorized

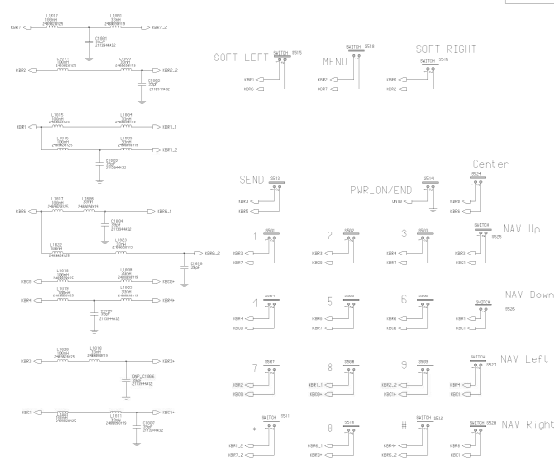
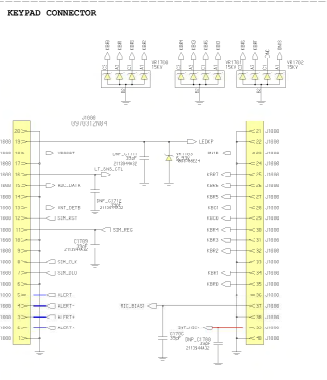
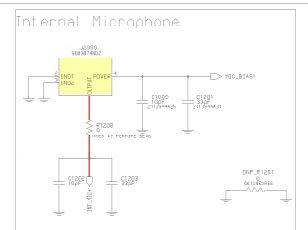
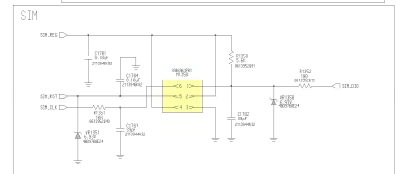
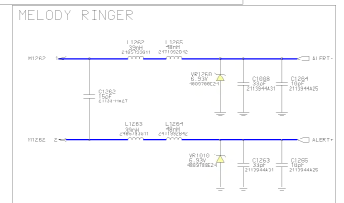
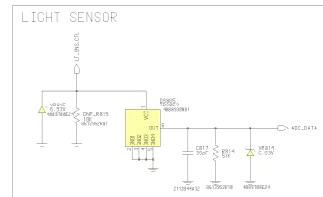
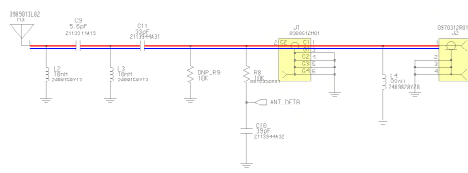
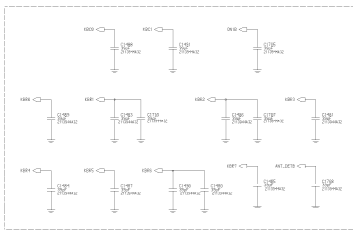
| | |
|------------------------------------|-----------------|
| 2025.08.19 | Rev. 1.0 |
| 1.0.0.0 | 8471241A01_P3_1 |
| Alexander Dushkin, Michael Dushkin | Page 1 of 1 |



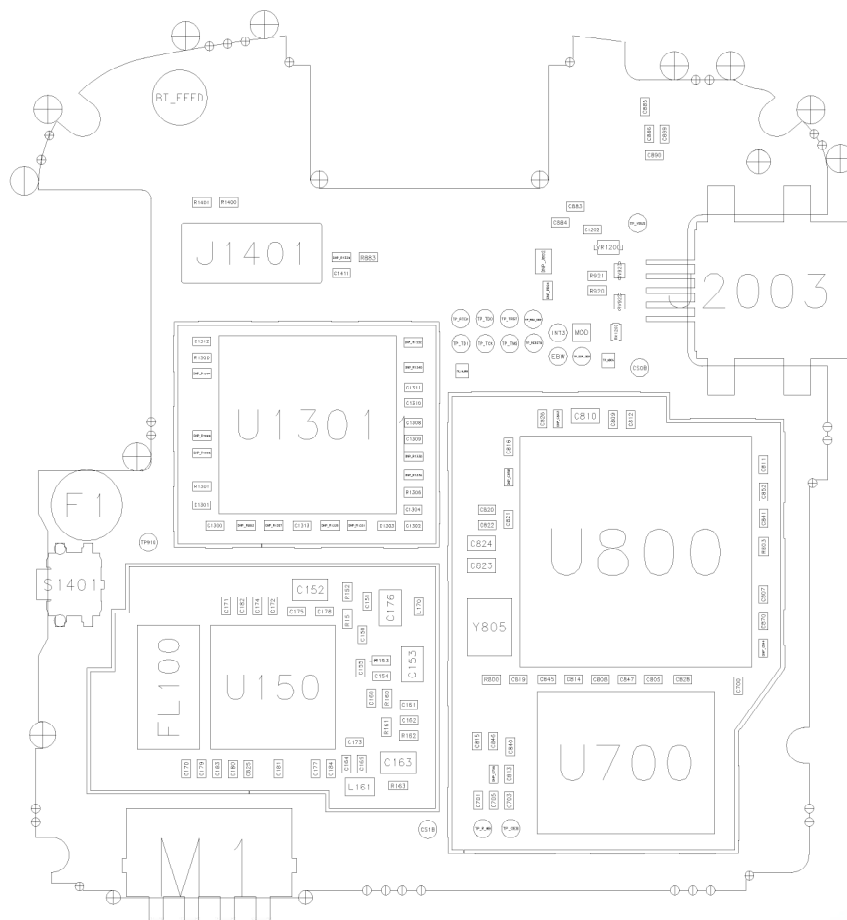
L2_L8_8471241A01_P3_1

Service Engineering
& Optimization
Level 3 Authorized

| | |
|----------------------------------|-------------|
| Level 3 Schematics | 500K 10 |
| L2_L8 | Rev. 1.0 |
| 8471241A01_P3_1 | Rev. 1.0 |
| Alexander Dushko, Michael Dushko | Page 1 of 1 |



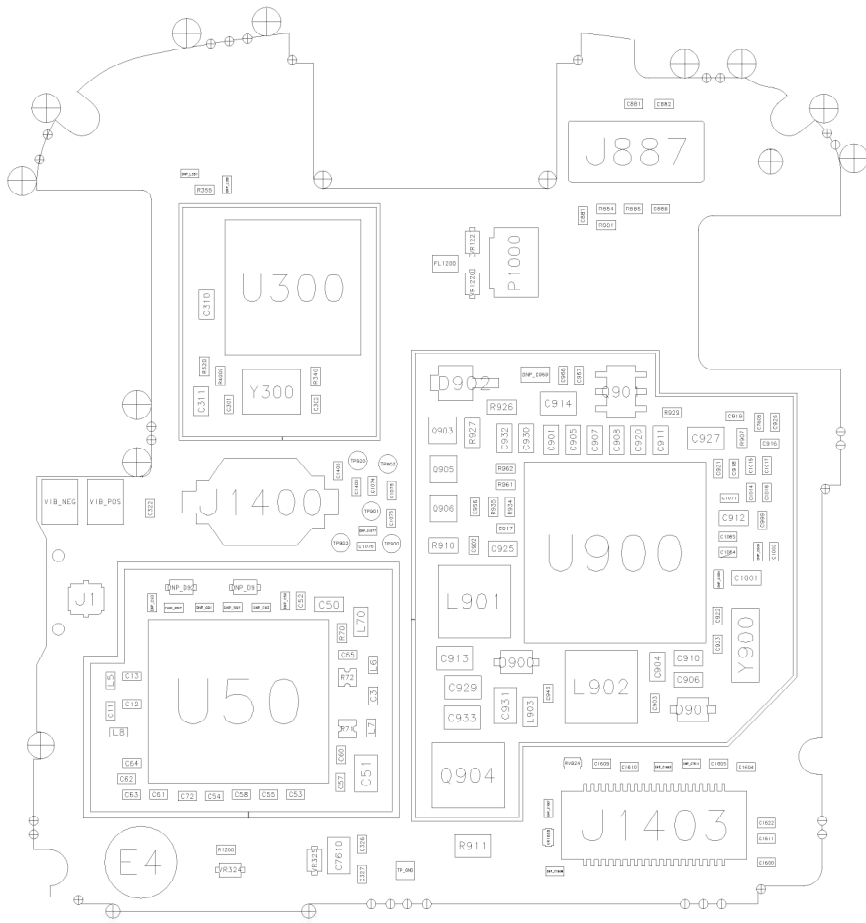
L2/L6 8471241A01_P3



Service Engineering
& Optimization
Level 3 Authorized

| | |
|------------------------------------|-----------------|
| REVISIONS | |
| Service Engineering & Optimization | 5/5/06, 12/1/08 |
| Level 3 Board Layout | Rev. 1.0 |
| 1.0 / 1.0 | 5671241A00_1P3 |
| | Page 1 of 2 |

L2 / L6 8471241A01_P3



REVISIONS

| | |
|------------------------------------|----------------|
| Service Engineering & Optimization | 2008-12-09 |
| Level 3 Board Layout | Rev: 1.0 |
| 1.2 / 1.6 | 04712401/01_F3 |
| | Page 2 of 2 |